



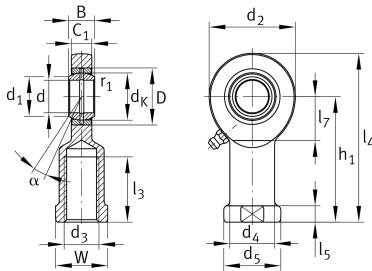
GIL10-DO

Rod end

Schaeffler ID:
0066351210000

Rod end with internal thread, left hand thread, requiring maintenance, sliding contact surface: steel/steel, DIN ISO 12240-4, dimension series E, type F, open design

Technical information



Main Dimensions & Performance Data

d	10 mm	Bore diameter bearing
D	19 mm	Outside diameter bearing
B	9 mm	Width inner ring
C_r	8,160 N	Basic dynamic load rating, radial
C_{0r}	22,000 N	Basic static load rating, radial
G_r	0,023 - 0,068 mm	Radial Clearance
	65.235 g	Weight

Dimensions

d_K	16 mm	Ball diameter
d_1	13.2 mm	Outer flange diameter inner ring
d_2	29 mm	Outer eye diameter
d_3	M10	Thread size
d_4	15 mm	Shank diameter
h_1	43 mm	Shank Length Internal thread head
α	12 °	Tilt angle
l_3	20 mm	Thread length Internal thread
l_4	57.5 mm	Total length internal thread head
l_5	6.5 mm	length rod end shank
l_7	15 mm	Distance drilling with/shaft start
d_5	19 mm	Shank diameter, large
C_1	7 mm	Width of the rod end
r_{1smin}	0.3 mm	Edge Spacing
W	17 mm	Width Across Flat
d_{OT}	0 mm	Bore diameter bearing, upper tolerance
d_{UT}	-0.008 mm	Bore diameter bearing, lower tolerance
B_{OT}	0 mm	Width inner ring, upper tolerance
B_{UT}	-0.12 mm	Width inner ring, lower tolerance

Temperature range

T _{min}	-50 °C	Operating temperature min.
T _{max}	200 °C	Operating temperature max.